



# Update national feed in schemes: The Netherlands (SDE)

Ron van Erck  
Ministry of Economic Affairs  
Energy & Sustainability  
The Hague, The Netherlands  
[E-mail: r.vanerck@minez.nl](mailto:r.vanerck@minez.nl)

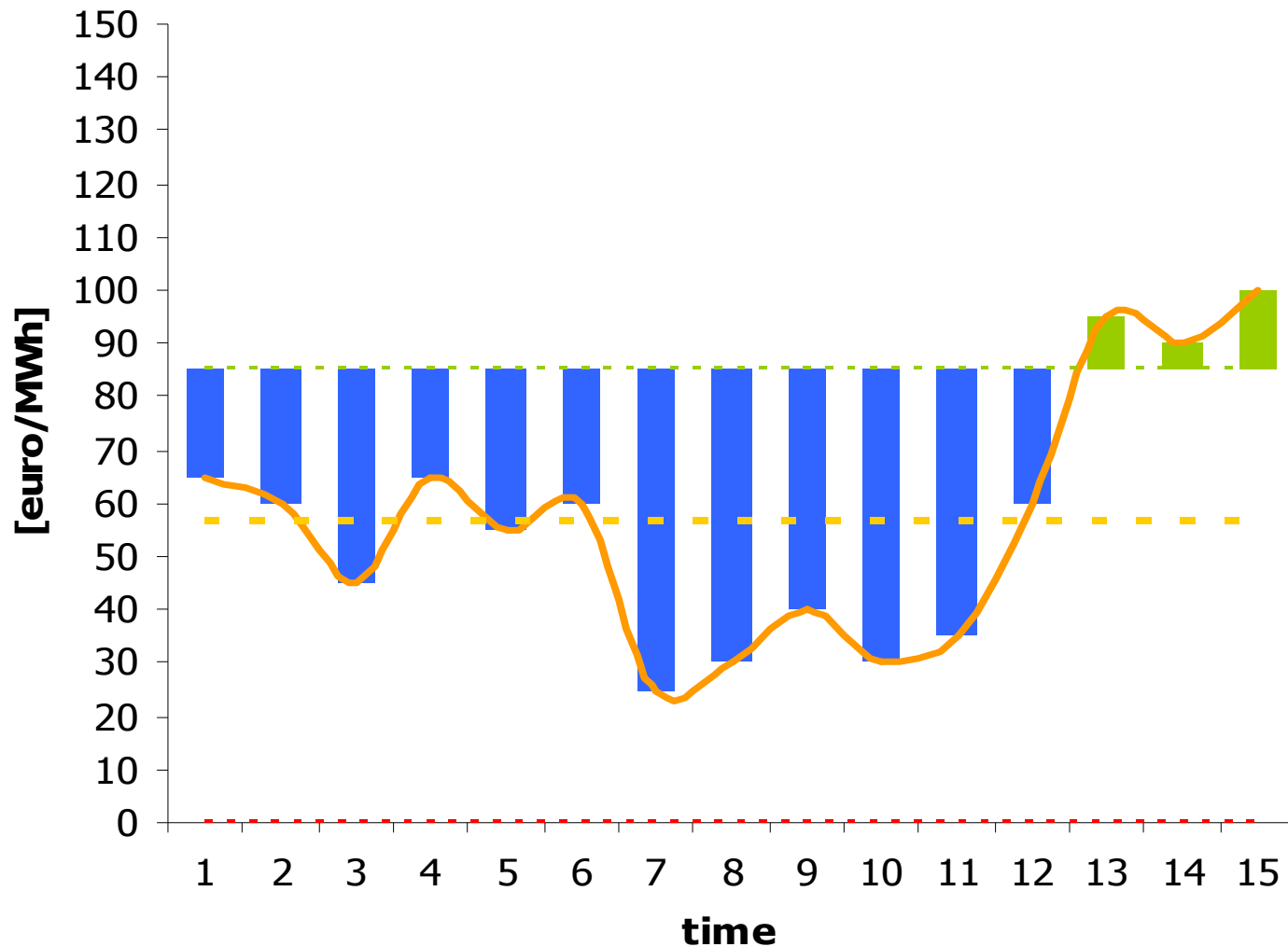
# Content

- Basic principles of SDE
- Improvements for 2009
- Remaining issues

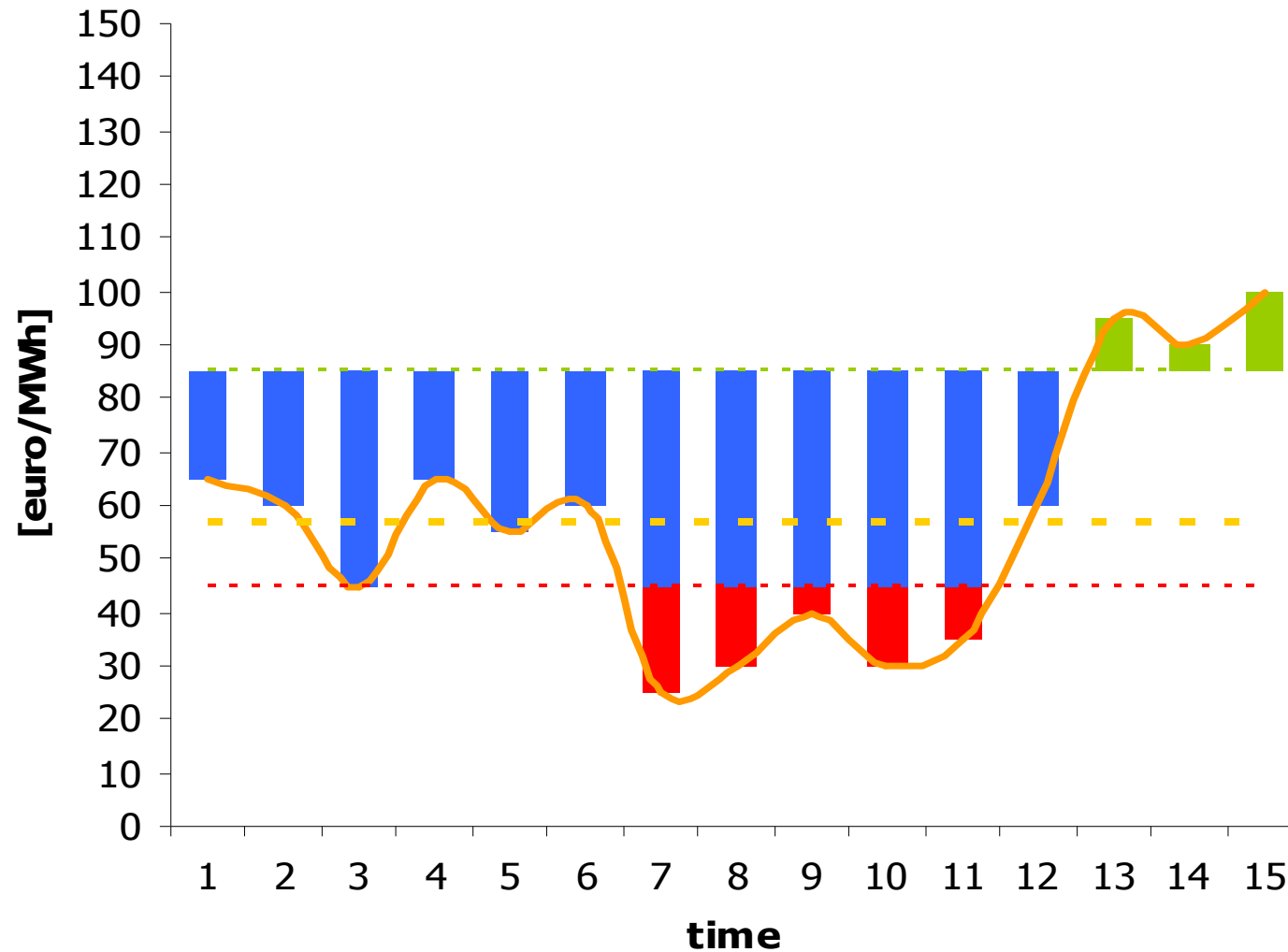
# Outline SDE

- New feed in premium scheme "**SDE**" opened April 1<sup>st</sup>
  - Financed from treasury
  - Total budget capped
  - Subsidy budgets per category possible
  - Renewable electricity and biogas
  - From 2009 also renewable heat (bio-CHP)

# SDE subsidizes difference between revenues and costs producer



..., but with subsidy cap based on 2/3 of expected long term electricity/gas price



# SDE total volumes 2008-2011

Wind on shore	~ 2000 MW
Wind off shore	~ 450 MW
Biomass dedicated	~ 200-250 MW
Solar	~ 70-90 MW

# Improvements 2009

- Wider range of biomass supported
  - Liquid biomass and waste redefined to secure sustainability
- Lowering administrative burden for (small scale) solar
- Introducing incentive for heat use from biomass conversion

# Renewable heat: More RE: higher tariff

- Renumeration per KWh
- More MJ/KWh means higher subsidie per KWh

MJ/KWh	0	1	2	3	4	5
Tariff (ct./KWh)	8,4	9,5	10,6	11,7	12,9	14,0

(Numbers are ficticious)

- Heat is measured and checked for useful use.

# Issues to be resolved

1. Depending on WOS and biomass
2. Wind off shore
  - Spatial planning off shore: reserving area(s) for 6000 MW
  - Grid connection to main area(s)
3. Biomass
  - Co-firing of biomass: What volume required for target compliance and how to support?