

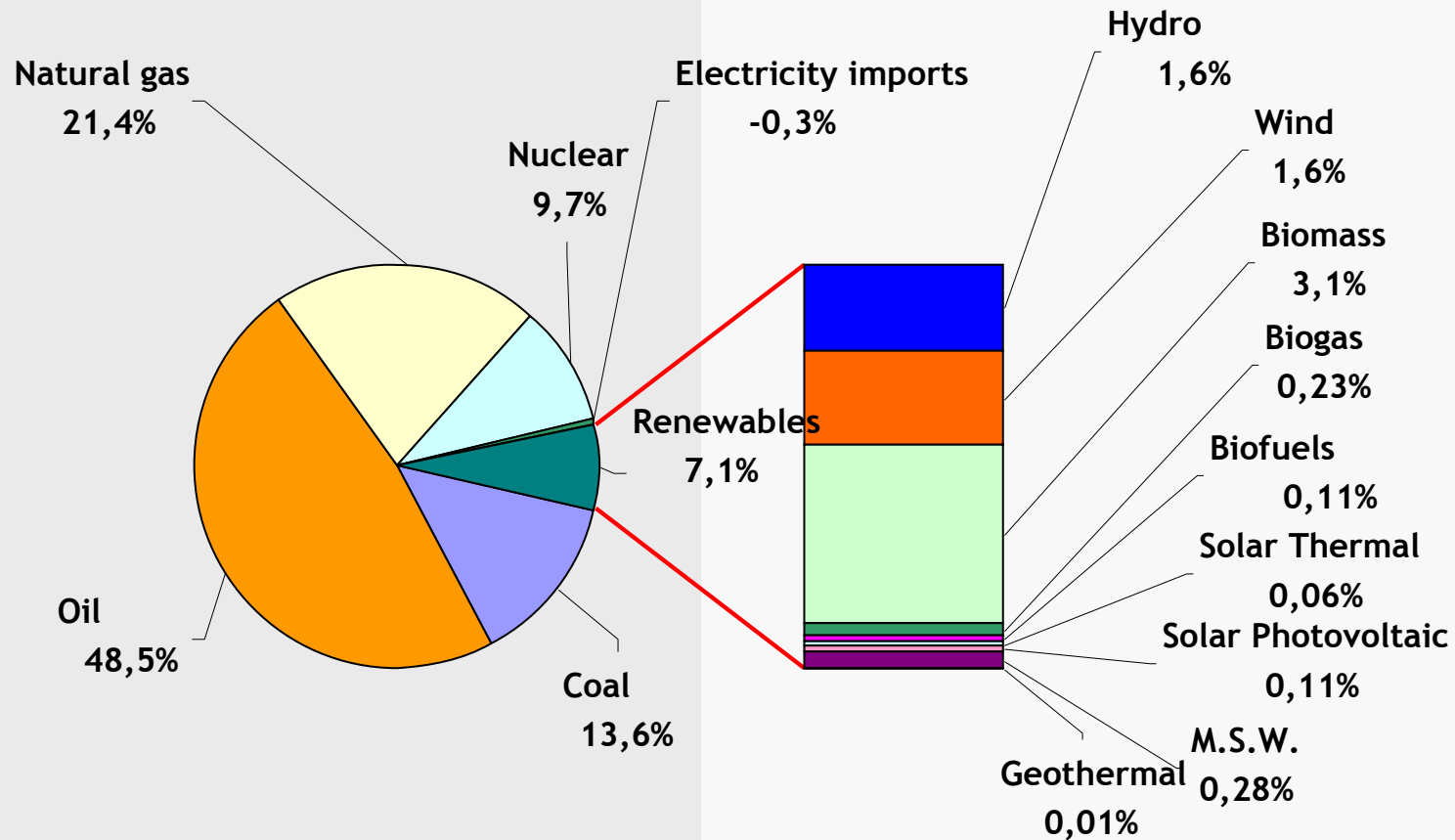


**6th Workshop of the International Feed-in Cooperation
3 – 4 November 2008, Brussels**

**Venue: Spanish Permanent Representation
52 Bd. du Régent
1000 - Brussels**

Hugo Lucas
IDAE - International Relations Department

CONTRIBUTION OF RES TO PRIMARY ENERGY CONSUMPTION, 2007

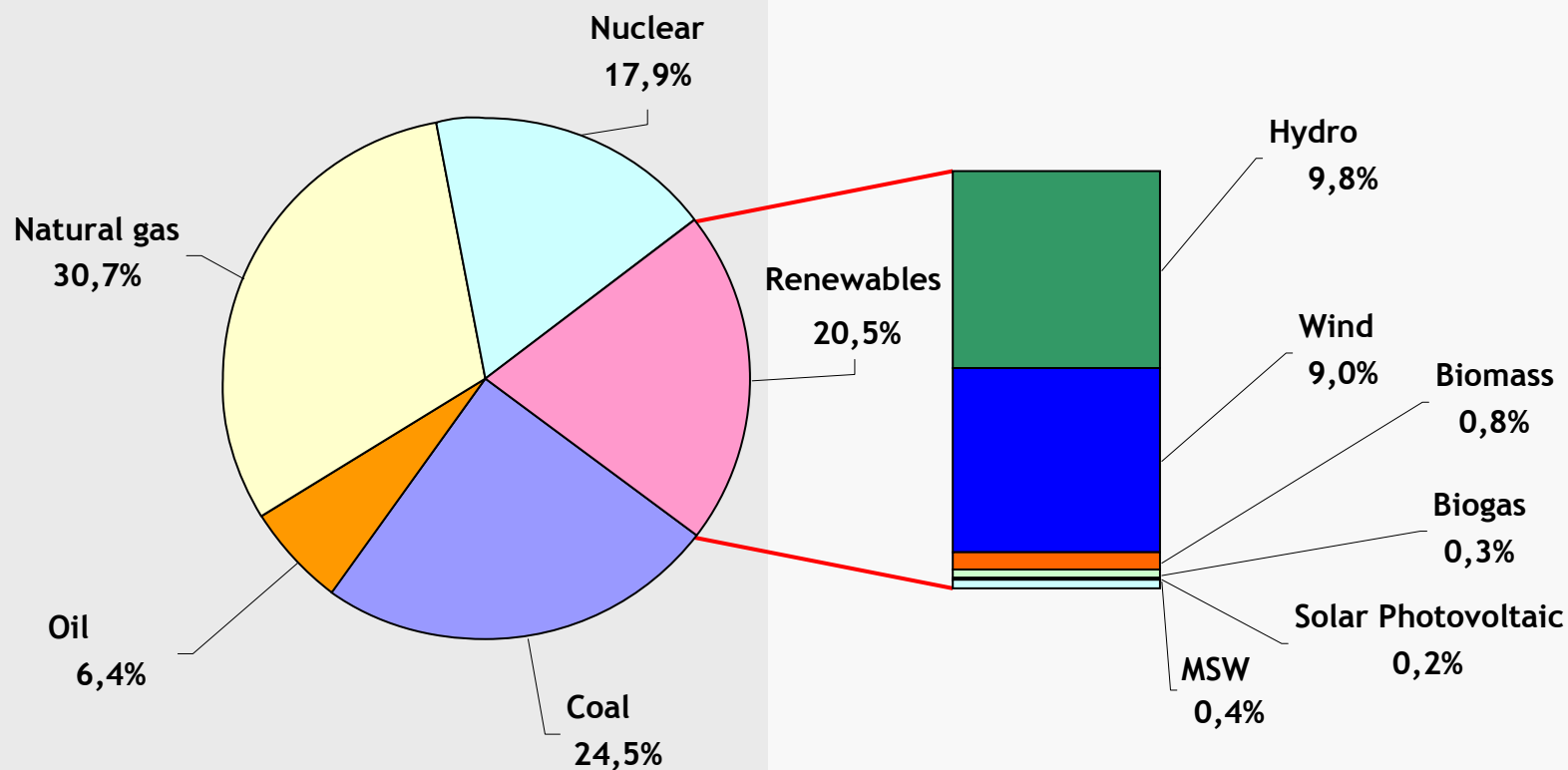


Source: Ministry of Industry, Tourism and Trade / IDAE

6th workshop of the International
Feed-In Cooperation

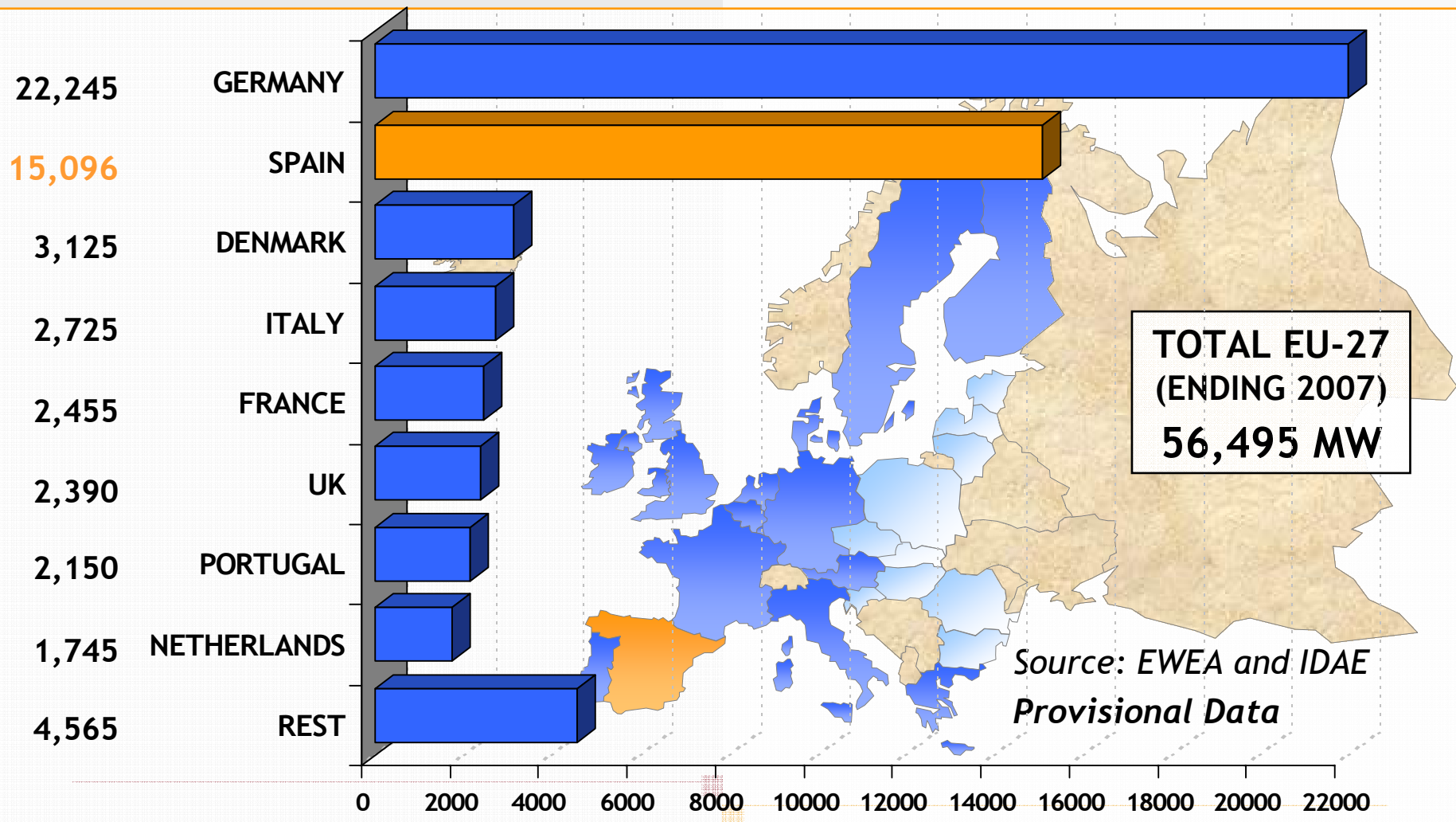
Brussels, November 3rd, 2008

CONTRIBUTION OF RES TO ELECTRICITY PRODUCTION, 2007

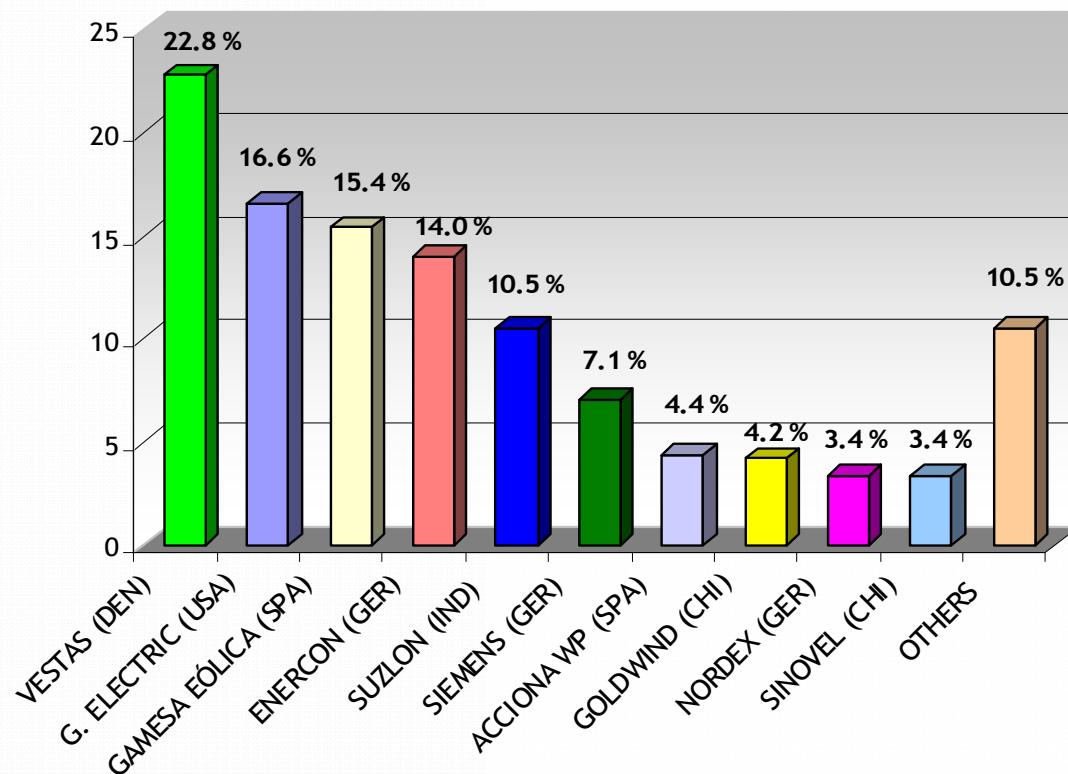


Source: Ministry of Industry, Tourism and Trade / IDAE

Wind energy capacity (MW) in the European Union (EU-27) - 31/12/2007

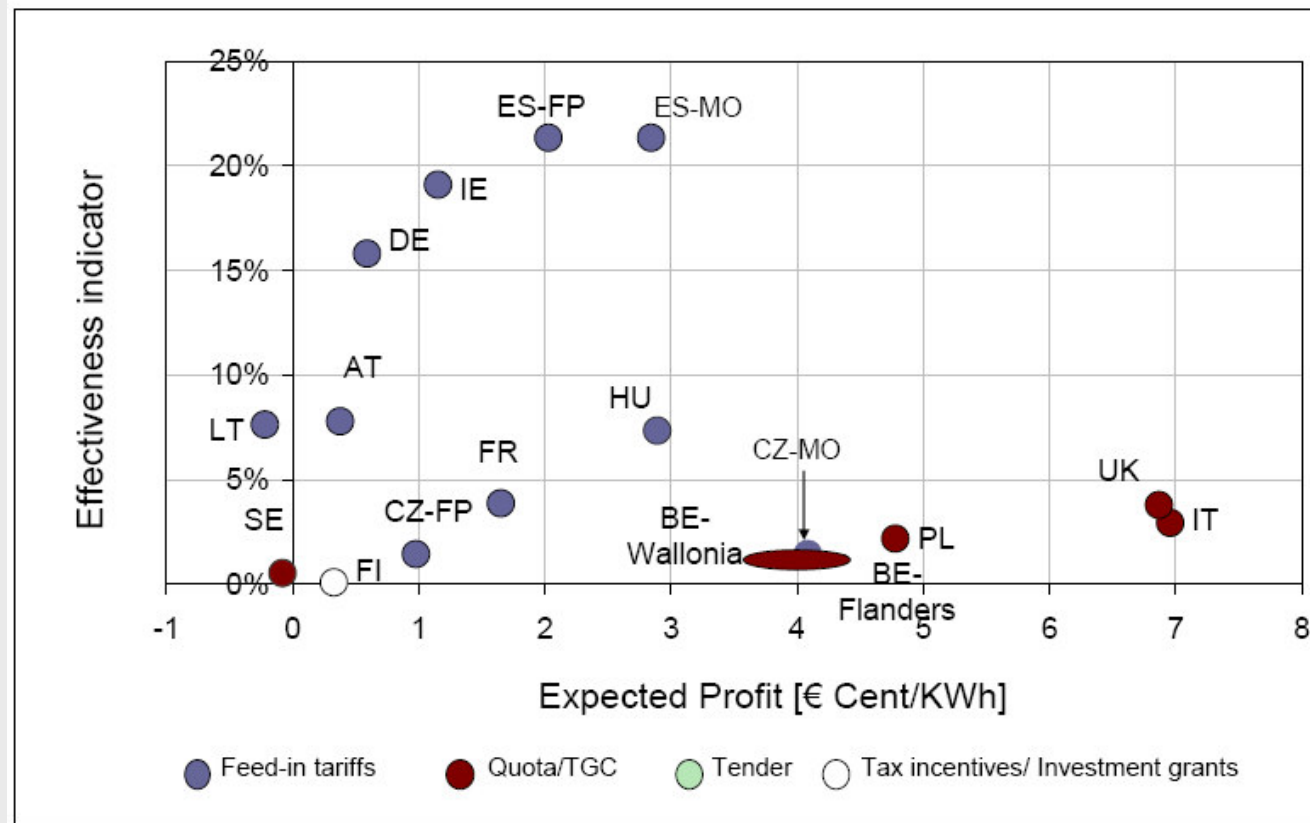


WORLDWIDE MARKET SHARE IN 2007



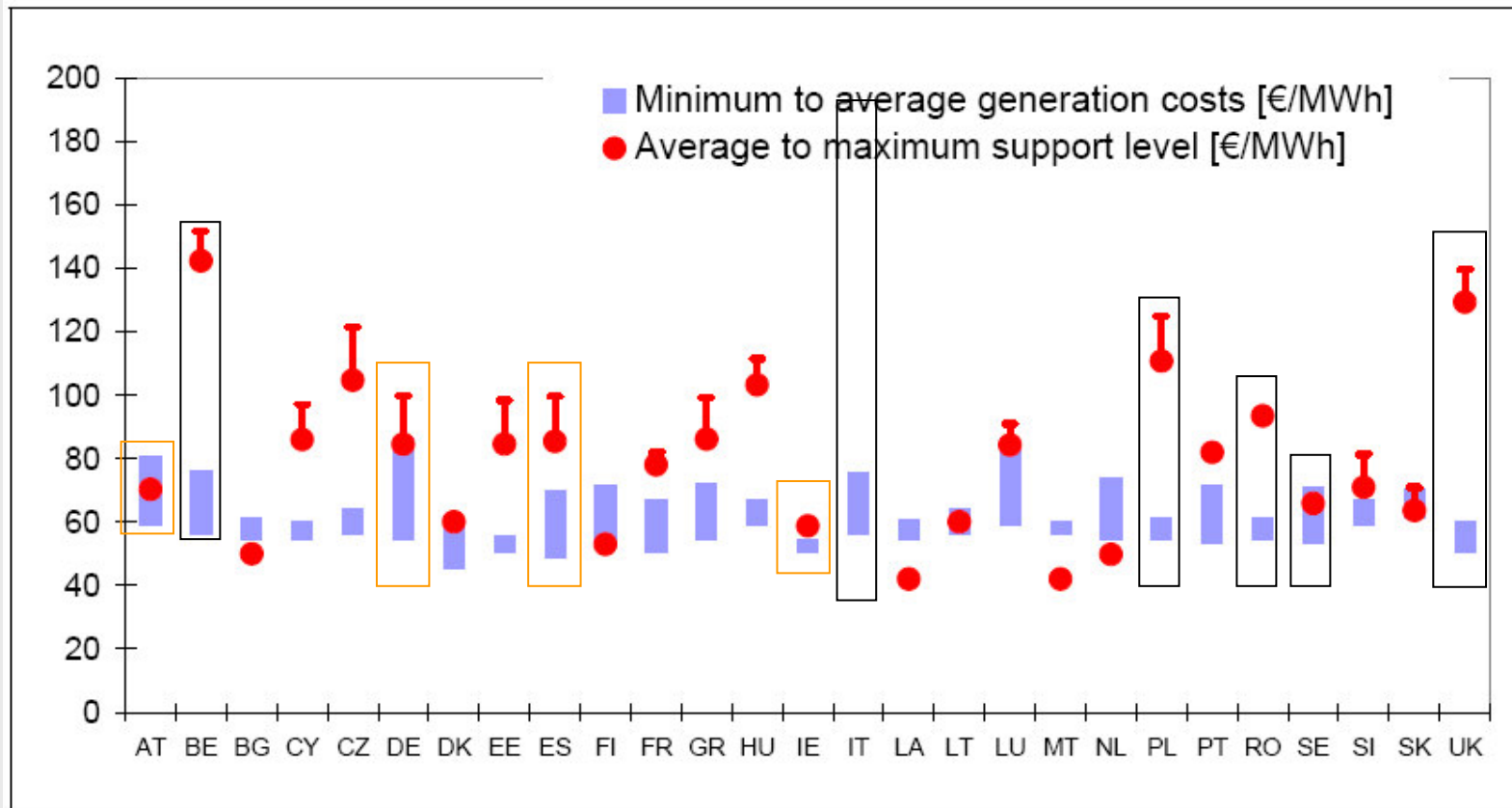
Source: BTM Consult - March 2008

SUPPORT SCHEMES EFFECTIVENESS INDICATOR - WIND



Source: European Commission; 2008

SUPPORT SCHEMES EFFICIENCY INDICATOR - WIND



Source: European Commission; 2008

Introduction

SOLAR-THERMOELECTRIC

- The developers are **large groups linked to the energy and infrastructure sectors** which have a high financial and debt-servicing capacity to undertake projects of this kind.
- Support of the **PSA (Almería Solar Platform)**. A **cutting-edge innovation centre in this solar technology**.
- The **specific sector's industry** is being implemented.
- **Specific plans for the development of innovative projects**.

Situation and perspectives

- In operation the first commercial plant PS10 (11MW) in Seville.
- Works of PS 20 (20 MW) and AZ 20 started.
- 7 additional projects of Solúcar waiting for permit, with a total expected power over 350 MW.
- Iberdrola has announced several plants with cylinder-parabolic collectors.
- Companies such as SENER (Solar Tres) and ACS (ANDASOL; technology: cylinder-parabolic collectors) promote projects for 2008.

SOLAR-THERMOELECTRIC



SOLAR PHOTOVOLTAIC ENERGY

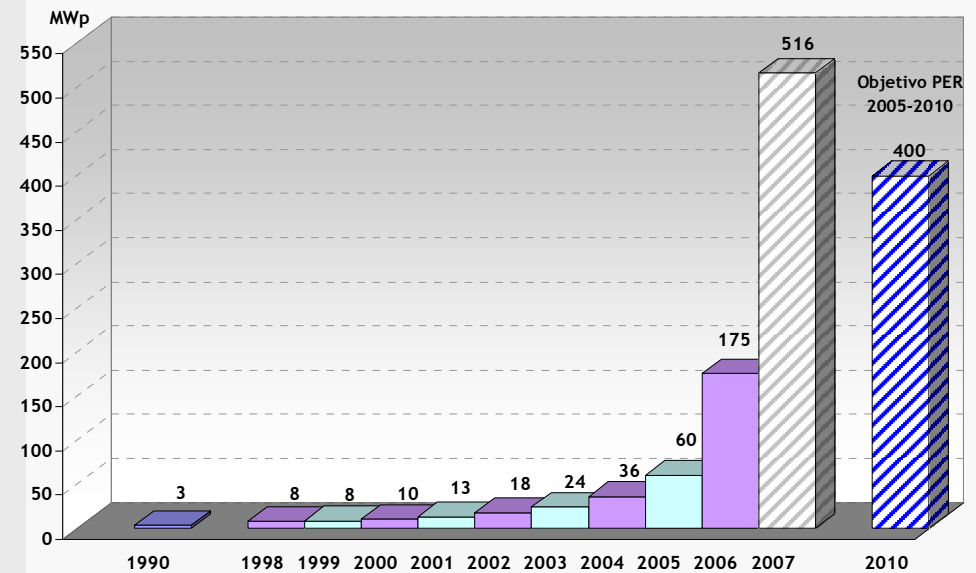
Situation and perspectives

2004: 12.2 additional MWp
 2005: 23.7 additional MWp
 2006: 115.1 additional MWp
 2007: 340.8 additional MWp

By the end of 2007, 32% of the increase target specified in the REP 2005 - 2010 was achieved.

Electric Power Generated in 2007: 446 GWh (source: CNE)

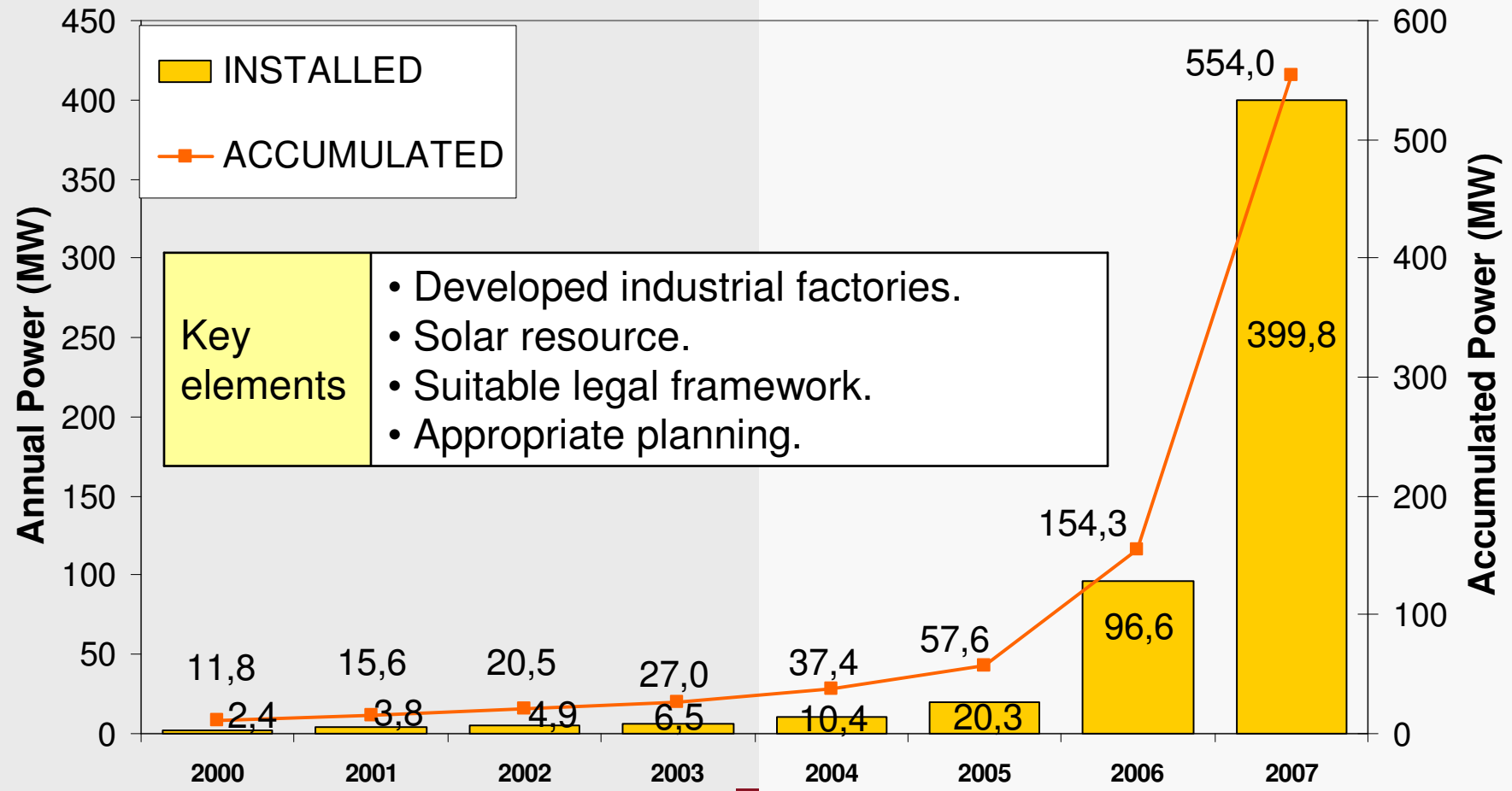
Installed Power & Forecasts (MWp)



Source: IDAE
 2007 data: provisional

Spanish installed evolution

Photovoltaic



RENEWABLE ENERGY IN SPAIN 2007

- Proposal for a Directive on the promotion of the renewable energy sources.
- Royal Decree 1578/2008 on feed-in tariff for photovoltaic.
- Renewable Energy and Energy Efficiency Law.
- Spanish Renewable Energy Plan 2005 – 2020.
- IRENA, Euro-Mediterranean Solar Plan.

Thank you for your attention

www.idae.es

hlucas@idae.es